

# REAL ESTATE WEEKLY

June 18, 2014

<http://www.rew-online.com/2014/06/13/childrens-rooftop-carnival-at-the-whitman-penthouse/>

## GALLERY

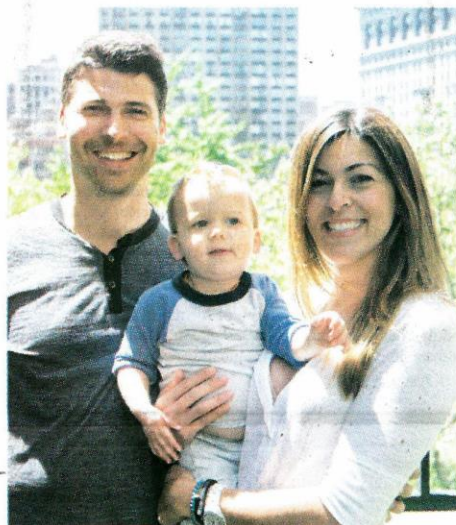
Douglas Elliman Real Estate agents Melanie Lazenby and Dina Lewis hosted a children's party at the duplex penthouse at the Whitman on Madison Square Park. In conjunction with Madison Square Park's Kid's Fest 2014 with story telling, music, arts and crafts, kid's concerts, the Whitman Penthouse was transformed into a VIP rooftop carnival. Agents from Douglas Elliman, Corcoran, Brown Harris Stevens, Sotheby's, Stribling and Town, along with their families enjoyed a bouncy house, face painter, carnival games, Nathan's hot dogs, popcorn and balloon artists on the large landscaped terrace of the penthouse facing Madison Square Park.



Douglas Elliman's Carolyn and Paul Zweben and daughter Olivia.



Douglas Elliman's Dina Lewis and Melanie Lazenby with Dina's daughter Hannah enjoy the rooftop carnival at the New Georgian style building, located at 21 East 26<sup>th</sup> Street. It was originally built in 1924 as the corporate headquarters and showroom for textile king Clarence B. Whitman and Sons. Developer David Mitchell purchased the building and along with Jeffrey Cole of Jeffrey Cole Architects and Edward Martell of Maverick Real Estate Partners, transformed it into a four-unit condominium that is available for immediate occupancy. Three of the units have already sold. The penthouse - with its four terraces - is on the market for \$23,500,000.



DE's Andrew Anderson, Christie Anderson and son Wilder.



Douglas Elliman's Victoria Shtainer and son Lucas.



Douglas Elliman's Frances Katzen and daughter.